

# DUAL MONITOR SET UP FOR REMOTE DESKTOP

Revised May 13, 2021

## OVERVIEW

In order to be able to use dual monitors in your personal remote desktop (RD) or Dean's Office Jump Server (doapps.medsch.ucla.edu) environment, you must set up dual monitors BEFORE connecting to your remote desktop session. This only needs to be once.

## STEPS

### 1) Open Remote Desktop\*

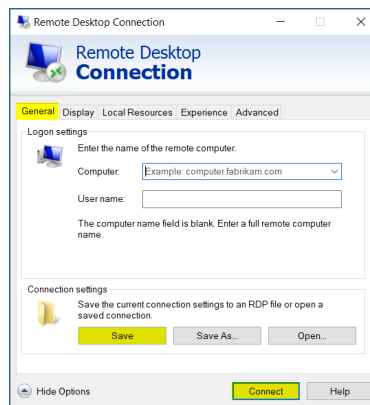
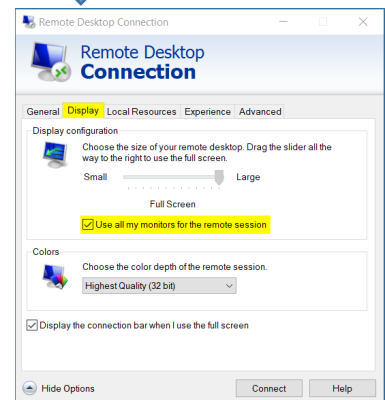
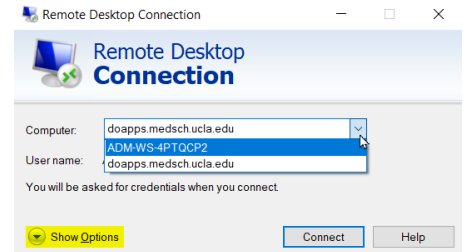
\* This can be done by clicking on your "Start" windows icon on the lower left hand corner of your computer screen & typing "remote"

### 2) Click on Show Options near the bottom left

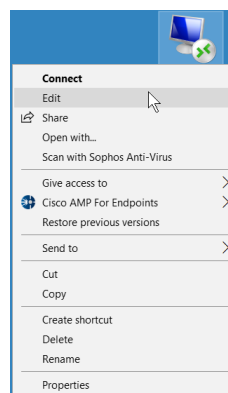
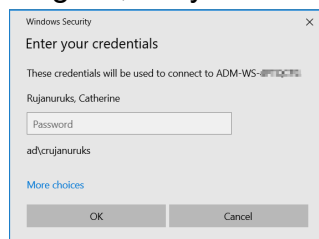
### 3) Click on the Display tab

### 4) Check "Use all my monitors for the remote session"

### 5) Click on the General tab & click save before clicking connect



\* If your RD auto-logs in, i.e. you see the below screen when you click on Remote Desktop, follow different steps.



### 1) RIGHT-click on RD icon on your desktop

### 2) Click on Edit

### 3) Follows steps 3-5 above