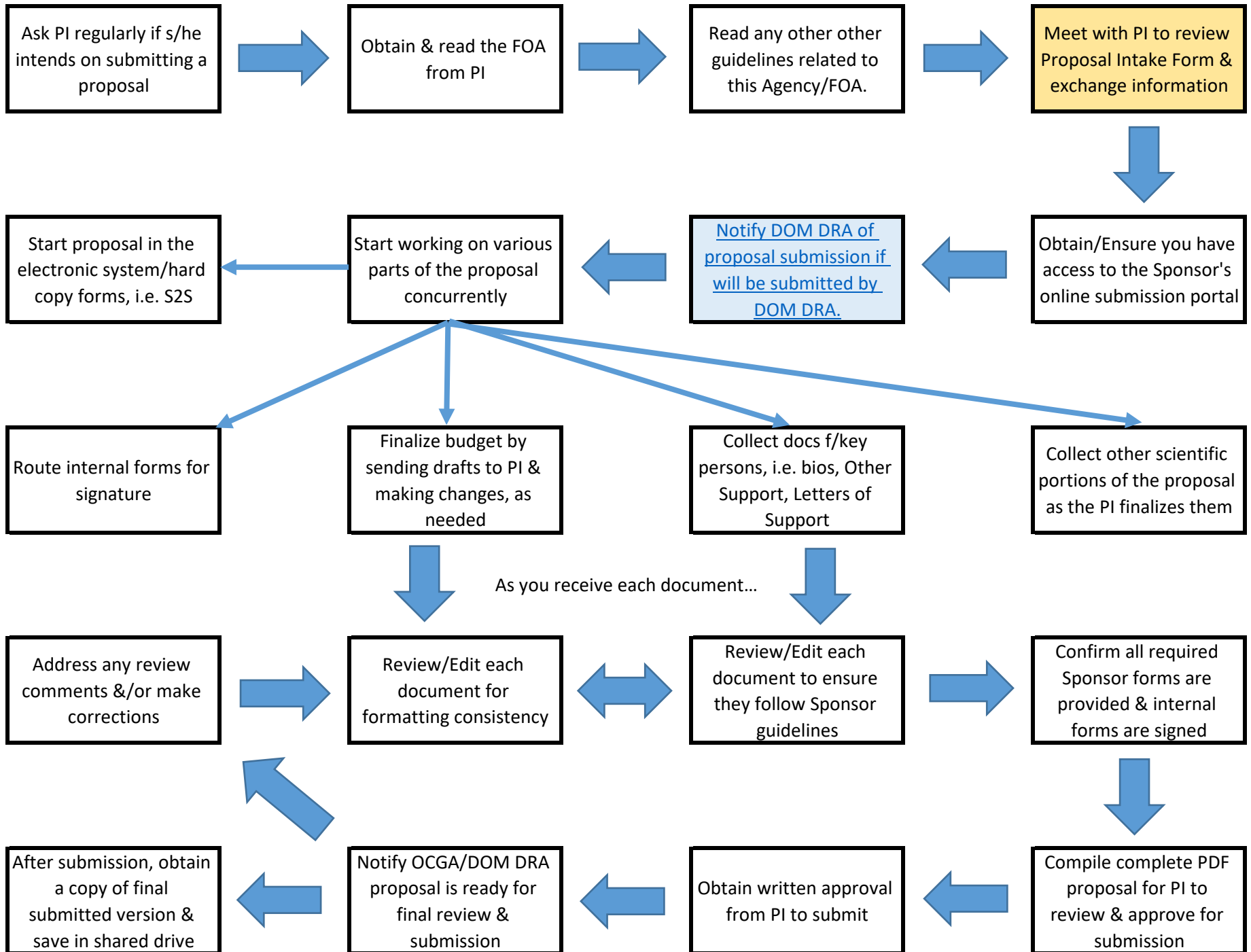


Proposal Flowchart



Proposal Flowchart

Cell: G2

Comment: PDF: <https://uclahs.box.com/s/8o3wt9sbvc02stzwflt49tr5ibtqgcgq>

Online: <https://forms.office.com/r/sJyD3hnUW9>

Key information:

- * PI(s)
- * Sponsor due date
- * Back calculate to Internal Due Date
- * Final Title
- * List of key personnel (KP)
- * Expected start date of project period
- * # of budget periods
- * Target budget \$ amounts - DC vs. TC
 - * Detailed or modular
 - * Draft budget skeleton
- * Subawards - yes/no?
 - * If yes, names & admin contact information
- * Animals/Human Subjects - yes/no?

Cell: E4

Comment: Click on link embeded in cell E4 to submit online proposal notification form.

DOM DRA only submit DOM proposals within the following criteria:

- * Federal Sponsor submissions via grants.gov/S2S
 - * except NIH Ts and Fs
 - * budgets with a UCLA DC < \$500K in any year (includes subwards IDC)

If will be submitted by different Central Office, skip this step.