

A photograph of two men in a modern hospital setting, viewed through a large glass window. On the left, a man in a white lab coat and glasses stands with his hands in his pockets, looking towards the right. On the right, a man in blue scrubs stands with his hands clasped, looking towards the left. In the background, a modern white building with many windows is visible under a clear blue sky. The image is overlaid with a blue and yellow geometric design.

Train at the Top-Ranked Health System in California

Welcome to UCLA!

UCLA

David Geffen School of Medicine

TABLE OF CONTENTS

Graduate Medical Education

Outstanding Clinical Training

- [4 Clinical Range](#)
- [5 Wide-Reaching Health System](#)
- [8 Leading Research](#)
- [9 Outstanding Mentors](#)
- [12 Collaborative Campus](#)

Join a Supportive Community

- [13 Delivering Acts of Kindness](#)
- [14 Justice, Equity, Diversity, and Inclusion](#)
- [15 Los Angeles](#)

See Yourself Here

- [16 We Take Care of You](#)
- [17 We Look Forward To Meeting You!](#)

UCLA's world-class hospitals, extensive training sites, and enriching patient experiences prepare trainees to live a life of impact.



99 ACGME-
accredited specialty
and subspecialty
programs



1,300
post-graduate
training positions



Diverse training sites
across Los Angeles

*Our mission is to
deliver leading-edge
patient care, research,
and education.*

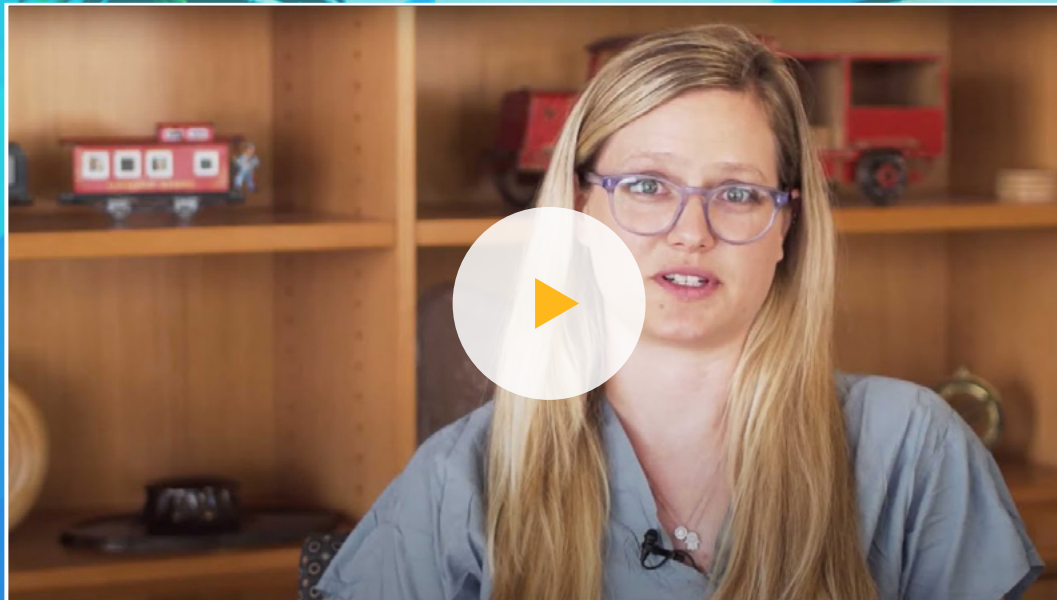
OUTSTANDING CLINICAL TRAINING

Hone your practice while making a difference

Clinical Range

Trainees benefit from a spectrum of complex care experiences.

► [Hear from our trainees](#)



OUTSTANDING CLINICAL TRAINING

Hone your practice while making a difference

Wide-Reaching Health System

Los Angeles provides varied clinical-care opportunities that prepare trainees for practically any future challenge.



Ronald Reagan
UCLA Medical
Center



Santa Monica/
UCLA Medical
Center and
Orthopaedic
Hospital



Stewart and
Lynda Resnick
Neuropsychiatric
Hospital at UCLA



West Los Angeles
VA Medical
Center



UCLA Medical
Group

OUTSTANDING CLINICAL TRAINING

Hone your practice while making a difference

“I chose UCLA because you get to do a little bit of everything. I spent time with patients who very well might have donated the building that you happened to be working in, all the way to patients who this is the first time they’ve seen a doctor in 30 years – and everything in between.”

- Dr. Chase Richard
PGY2, UCLA Emergency Medicine



OUTSTANDING CLINICAL TRAINING

Hone your practice while making a difference

State-of-the-Art Training Facilities

Advanced training facilities create a rich environment for mastering clinical techniques and procedural knowledge.

UCLA Simulation Center

► [Take a Look](#)

Center for Advanced Surgical and Interventional Technology (CASIT)

► [Take a Look](#)

» *A da Vinci robotic surgery system and a human patient simulator*



GROWTH AND DISCOVERY

Realize your potential

Leading Research

Pursue basic science, clinical, and health services research with national leaders.

“The research that they are doing here is really stuff that they aren’t doing anywhere else. So it’s really exciting to be working with these people so directly who are doing such exciting new things.”

- Dr. Meghan Jardon

Resident, UCLA Diagnostic Radiology



Clinical research



Basic science research



Health services research



\$581 million in NIH-funded research grants

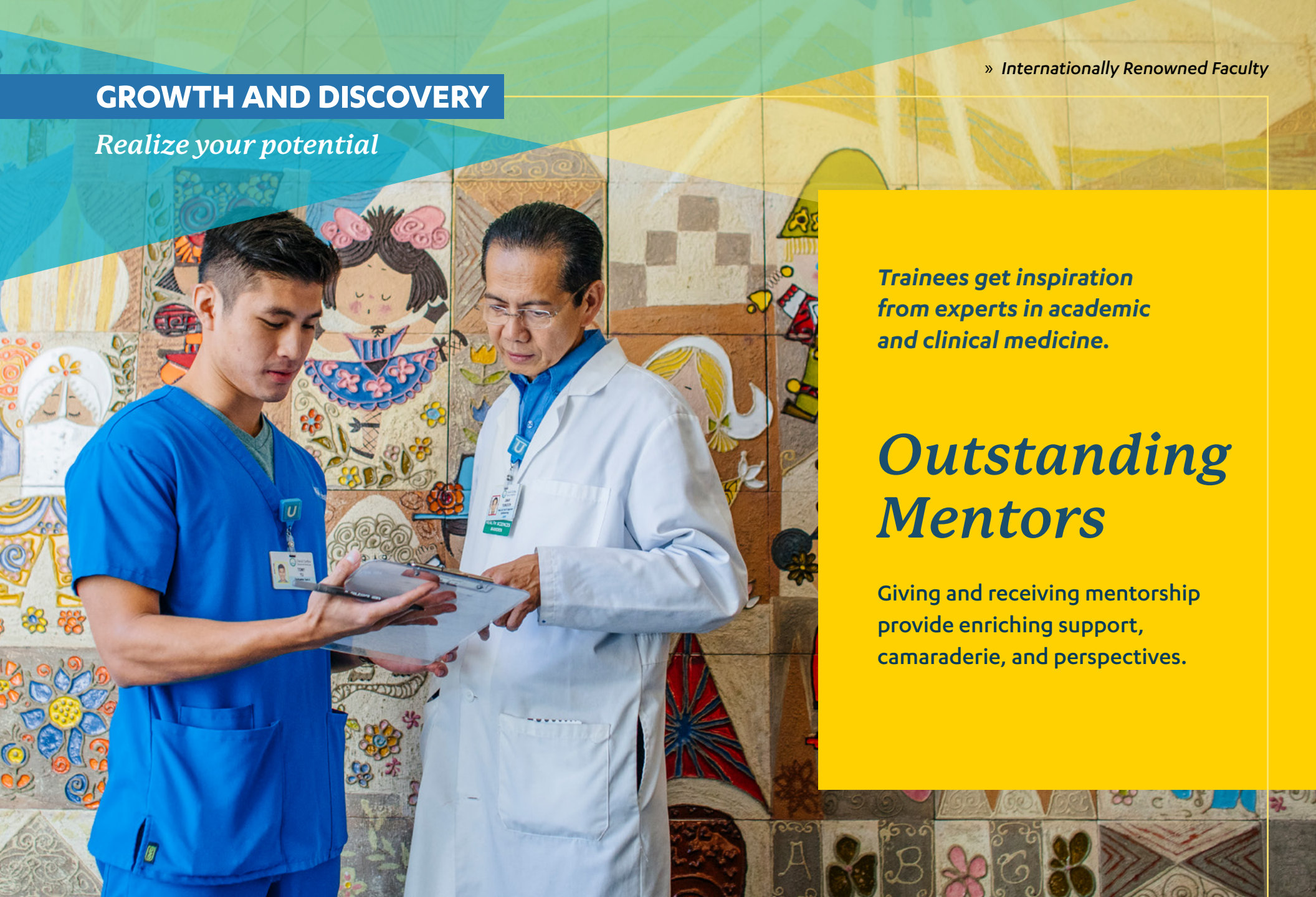
GROWTH AND DISCOVERY

Realize your potential

*Trainees get inspiration
from experts in academic
and clinical medicine.*

Outstanding Mentors

Giving and receiving mentorship
provide enriching support,
camaraderie, and perspectives.



GROWTH AND DISCOVERY

Realize your potential

“I am proud to work with so many committed colleagues, students, and residents at UCLA who foreground health justice in everything they do.”

- Helena Hansen, MD, PhD

Chair, Research Theme in Translational
Social Science and Health Equity



GROWTH AND DISCOVERY

Realize your potential



Physician-Scientist Pathway

STAR Program

Advance your physician-scientist training by pursuing a PhD at UCLA, Caltech, or RAND simultaneously with clinical specialty training at UCLA.

► [More about the STAR program](#)

GROWTH AND DISCOVERY

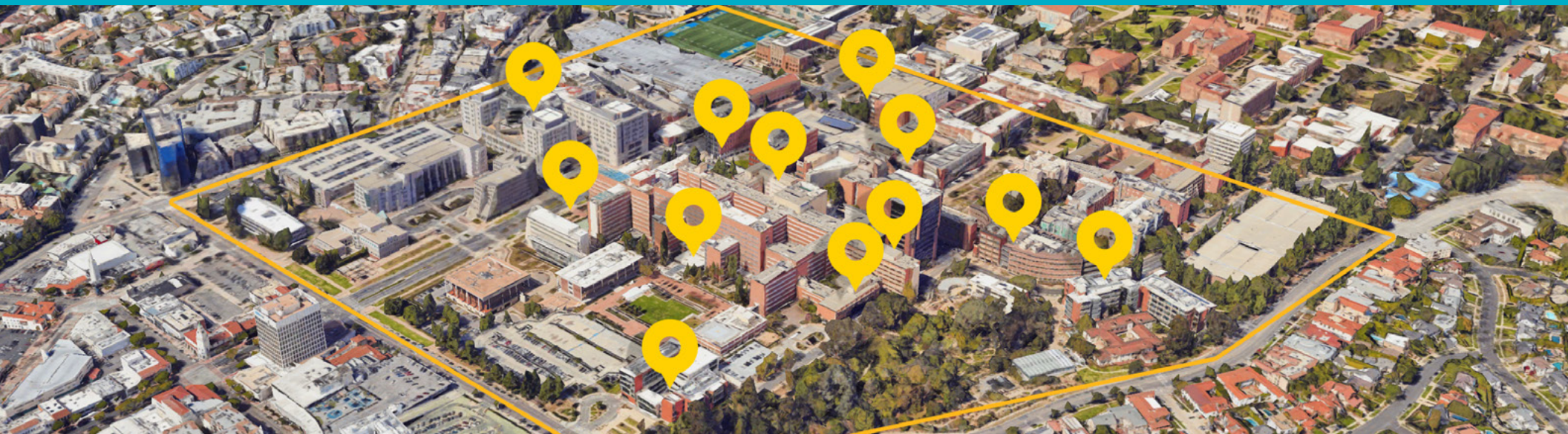
Realize your potential

Collaborative Campus

Our compact campus is home to leading experts in public health, engineering, computation, genetics, and other fields. Collaborations and life-changing conversations are just a short walk away.

In just 5 minutes, our trainees can walk to:

- Fielding School of Public Health
- UCLA School of Nursing
- UCLA School of Dentistry
- Terasaki Life Sciences Building
- California Nanosystems Institute
- Biomedical Sciences Research Building
- Henry Samueli School of Engineering
- Neuroscience Research Building
- Department of Human Genetics
- Department of Computational Medicine



JOIN A SUPPORTIVE COMMUNITY

Delivering Acts of Kindness

We're united by
shared values.



Community



Inclusion



Advocacy

JOIN A SUPPORTIVE COMMUNITY

Justice, Equity, Diversity, and Inclusion

Training the physicians of today for a more equitable tomorrow.

► [Hear from our trainees](#)

“We are privileged to live out our mission of excellence through diversity and advance justice through health equity at UCLA.”

- Lovelee E. Brown, MD
Founder & Faculty Advisor,
Minority House Staff Organization



JOIN A SUPPORTIVE COMMUNITY

Los Angeles

Explore your passions and interests in the most colorful city in the world.



Outdoor
Activities



Music



Scenery



Food



Nightlife

SEE YOURSELF HERE

We Take Care of You

So that you can take care of your patients

▶ [See benefits and wellness](#)

Medical insurance

Dental insurance

Vision insurance

Flexible Saving Account

Behavioral wellness resources

Convenient, modern housing available at below-market rates

Sample Agreement

See a sample Resident Agreement and learn more about eligibility requirements

▶ [Incoming Residents](#)

SEE YOURSELF HERE

We Look Forward To Meeting You!



We hope you see yourself growing and thriving as part of our UCLA community. Get an even more comprehensive view of life with us by enjoying [video tours, stories and interviews](#) spotlighting the remarkable students, staff, faculty and trainees who have made us the youngest top-10 medical school in the nation.

► [See yourself here](#)

We wish you the best of luck in finding not only the perfect place to continue your post-graduate training, but also a place you can call home.

Very sincerely yours,

Nelson SooHoo, MD

*DIO and Associate Dean for Graduate
Medical Education
Professor-in-Residence Department
of Orthopaedic Surgery*

Lisa L. Payne

Director, Graduate Medical Education